

# Green Scene



## NEW! Beehives and Compost

Have you checked out our new beehives and compost demonstration area yet? The honey bees have settled into their new home and are thriving! Right next to the hives is our compost demonstration area with six different types of backyard composters on display. Both areas have wonderful interpretive signage to provide a better understanding of these sustainable practices and pique your interest in doing so at home.



## Glyphosate Reduction Program

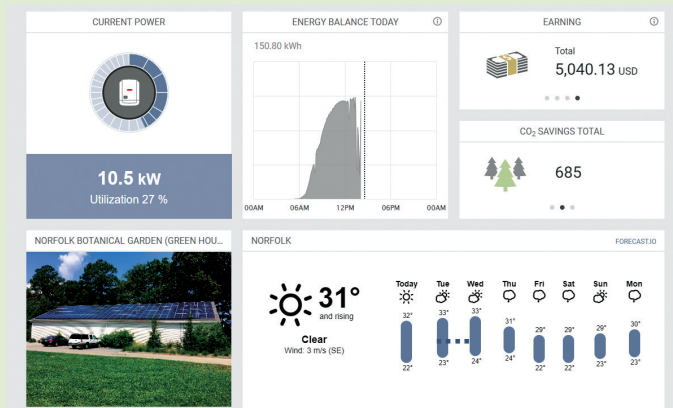
As part of our effort to reduce the use of the herbicide glyphosate, the Horticulture staff are conducting a study from June 2019-November 2019 to compare the relative effectiveness in weed control of glyphosate versus several alternative herbicides. Herbicide brands and their respective active ingredients (indicated in parentheses) included in this study are: Prosecutor (Glyphosate), Scythe (Pelargonic Acid), Avenger (d-limonene), and Finale (Glufosinate-ammonium). These various herbicides will be tested both in side-by-side comparisons in beds that have been specially designed for this purpose as well as in existing beds located in the Rose Garden and the Prickly Pear Lair Garden respectively.

Glyphosate is the active ingredient in the widely-used weed killer Round-up. There is mounting scientific evidence that the use of this chemical is contributing to the global health decline of multiple species of bees and is negatively impacting human health. Conclusions from this study will be featured in the next edition of *Dig*.

## Solar Panels Update

We love sunny days! Not because it makes our plants grow but because our solar panels are generating energy. Since their installation in August 2018, they have generated over 50 MWh (megawatt hours) which has supplied a majority of the greenhouse's energy needs. We've also saved more than \$5,000 in energy costs since the panels went live last August. This past April and May, our electric bill for the Greenhouse was actually zero! The only cost accrued was for the meter - \$6.95.

Beyond cost savings, we're also making a difference in carbon dioxide output. To date, we have saved 26 tons of carbon-producing energy sources from contributing carbon dioxide to the atmosphere. This is the equivalent of the carbon sequestering power of 658 trees. If you're ever curious as to how the solar panels are performing the day of your visit, check out the dashboard in Baker Hall Visitor Center. It's on the wall to the left of the Information Desk.



## Green Power

In addition to solar power, the Garden is 100% invested in the Dominion Energy Green Power program. This allows us to match 100% of our monthly electricity usage with Renewable Energy Certificates. With these certificates, Dominion Energy replaces energy generated from non-renewable sources on their power grid with energy generated from renewable sources. Pursuing this option is a worthy investment because it provides the opportunity to offset our carbon footprint and support green energy. For more information on the program, check out: [www.dominionenergy.com](http://www.dominionenergy.com)